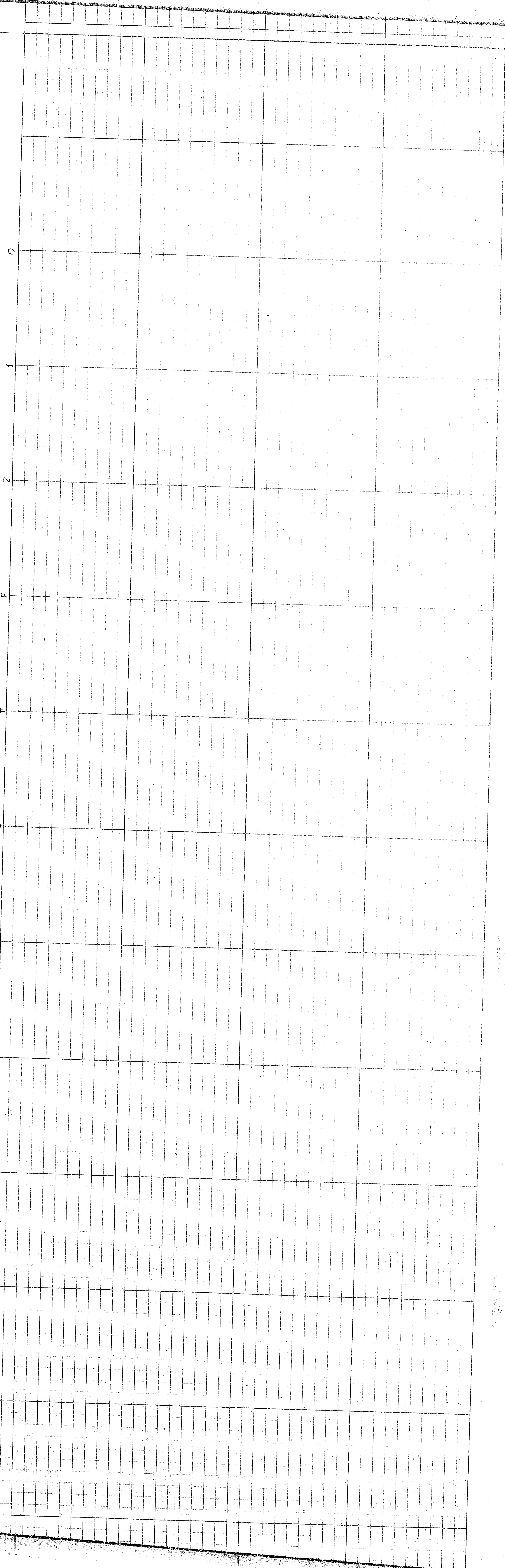
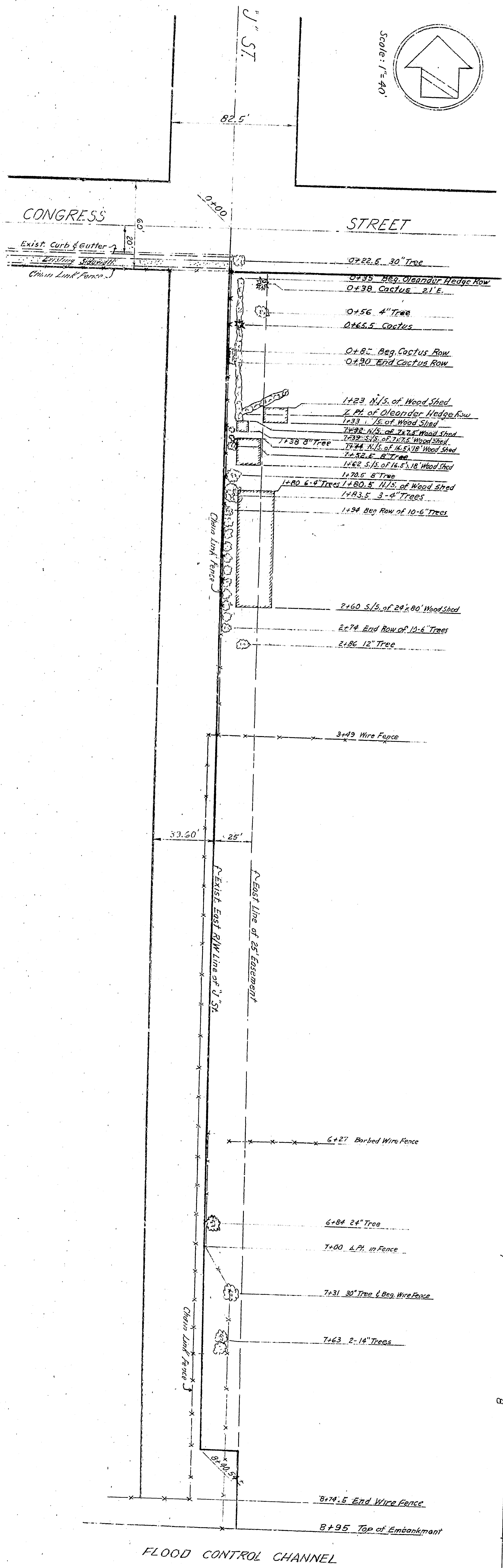


APPROVED: *[Signature]* 1923
 CITY ENGINEER
 RESISTED CIVIL ENGINEERING
 DRAWING NO. DRAWN BY
 338 CHECKED BY
 SHEET 1 OF 1 RECOMMENDED
 DEPARTMENT OF ENGINEERING
 CITY OF SAN BERNARDINO
 TOP OF SAN BERNARDINO ST
 25' STREET R/W, EAST
 CONGRESS STREET TO



APPROVED: *[Signature]* 1923
 CITY ENGINEER
 RESISTED CIVIL ENGINEERING
 DRAWING NO. DRAWN BY
 338 CHECKED BY
 SHEET 1 OF 1 RECOMMENDED
 DEPARTMENT OF ENGINEERING
 CITY OF SAN BERNARDINO
 TOP OF SAN BERNARDINO ST
 25' STREET R/W, EAST
 CONGRESS STREET TO